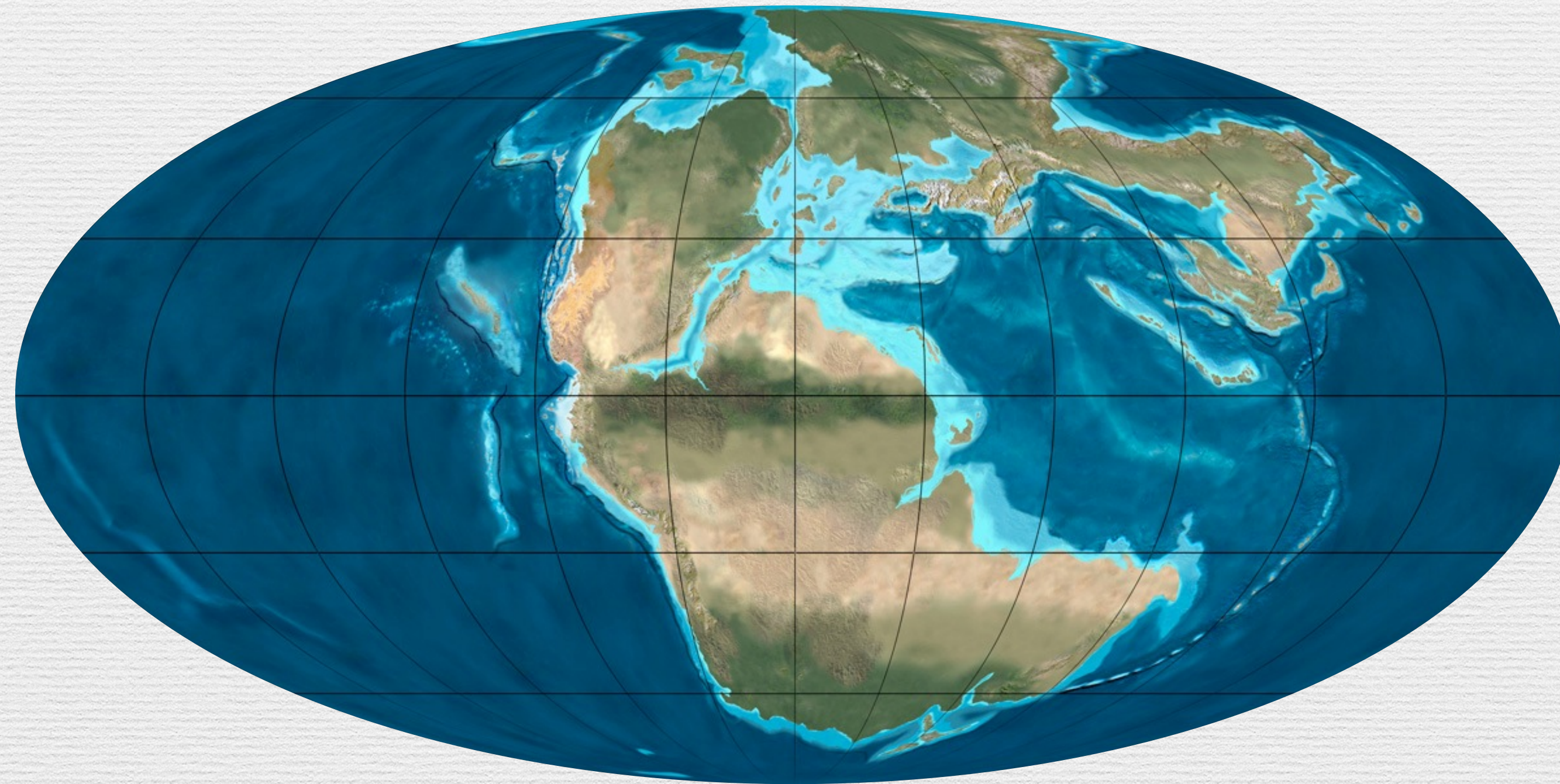


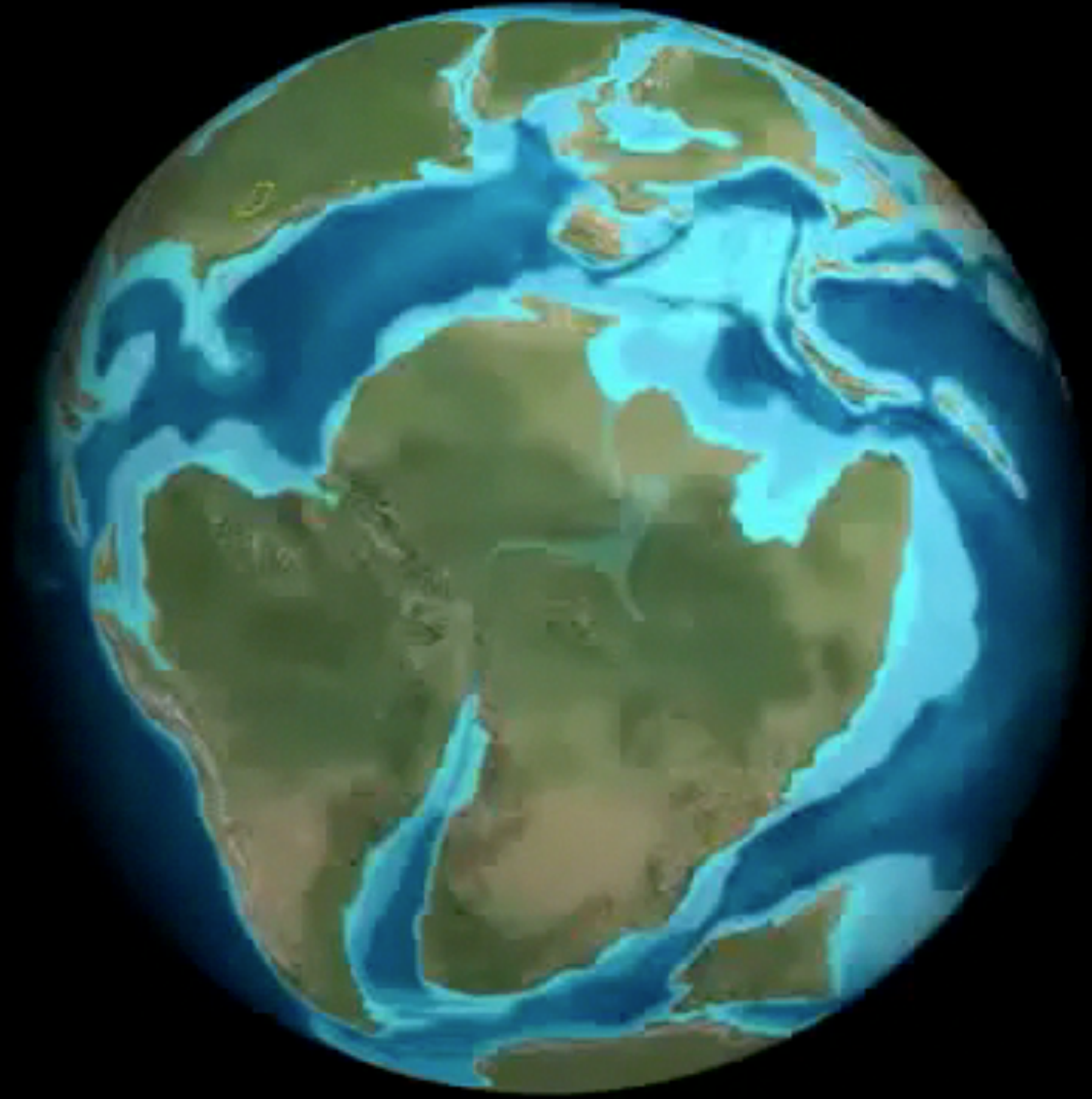
Continental Drift

What is continental drift?

Continental Drift

- Continental Drift - the theory that all of the continents were once joined together in a single landmass and have since drifted apart





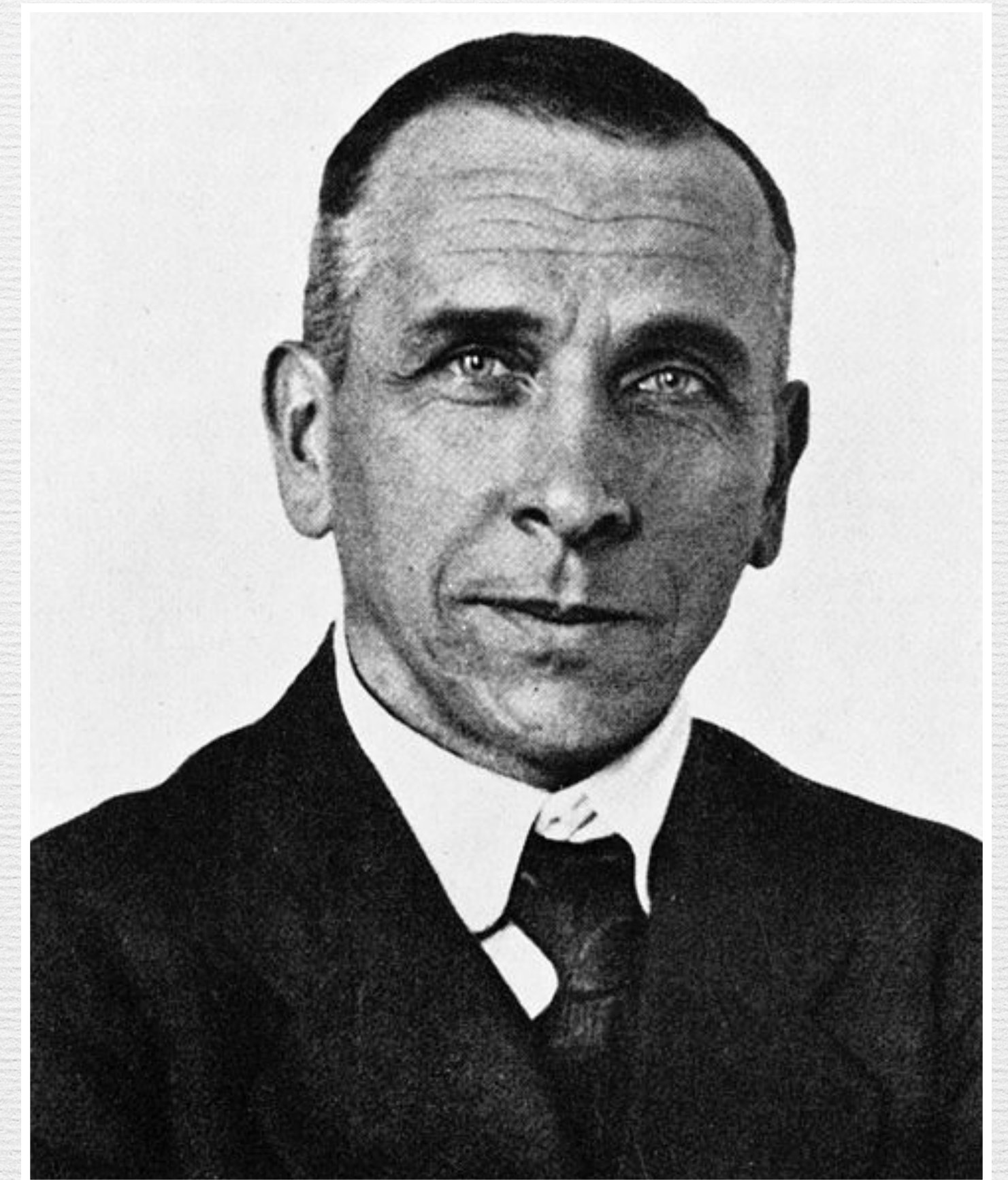
Continental Drift

- Pangaea - “all Earth” or name given to the super continent that existed 200 million years ago



Continental Drift

- Alfred Wegener, 1915
 - German geologist and meteorologist
 - Proposed the theory of continental drift
 - Hypothesized a super continent



Animated Life:

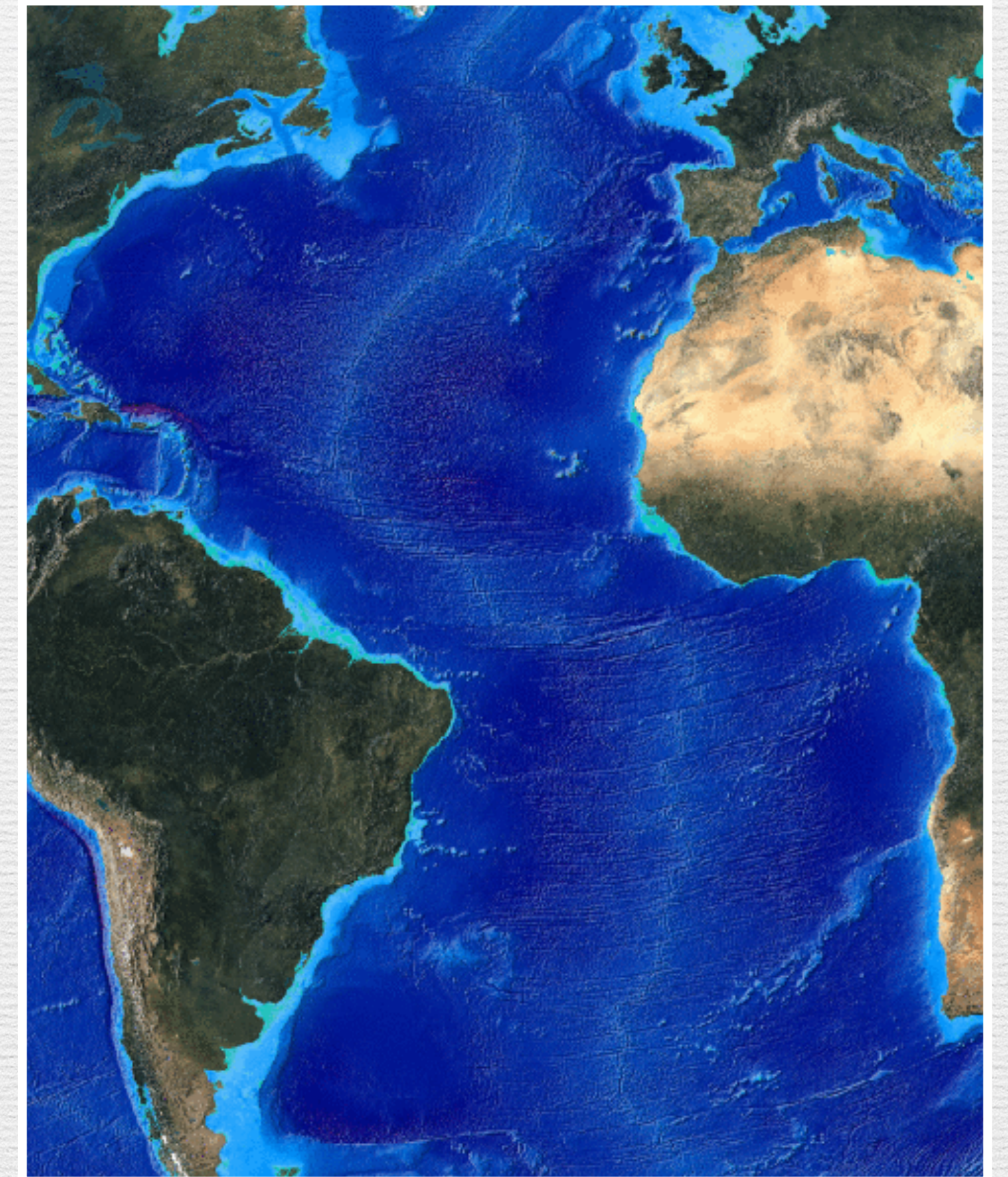


PANGEA

Continental Drift

- Evidence

1. Similarities in the shape of Africa's west coast and South America's east coast





Jigsaw Fit of the Continents

Continental Drift

- Evidence

2. Fossil remains of the *Mesosaurus* were found in South America and South Africa





Mesosaurus Size



Mesosaurus Size

Continental Drift

- Evidence

3. Fossil remains of the *Glossopteris* were found throughout India, South America, Africa, and Antarctica





Fossilized *Glossopteris* Leafs

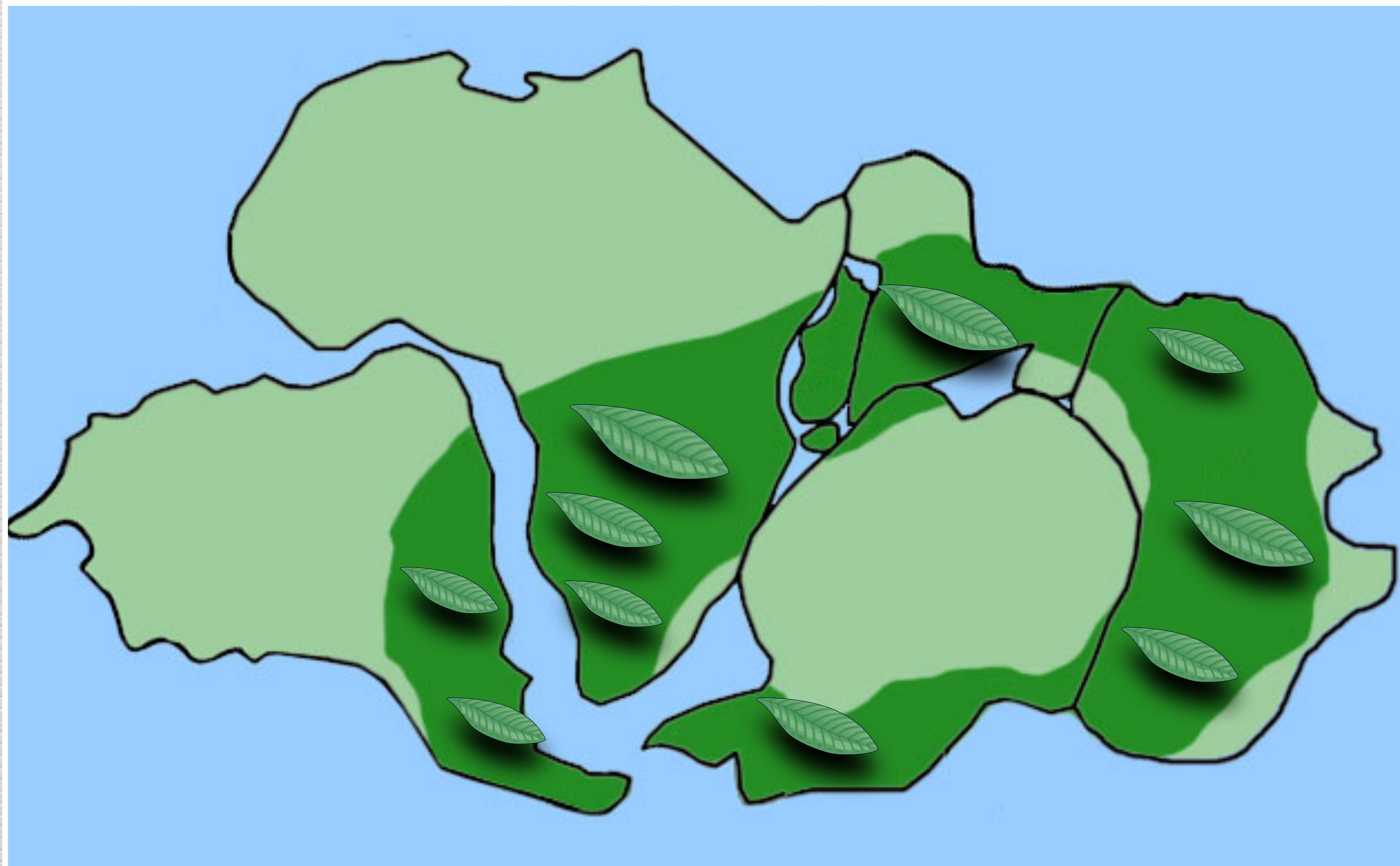


Plate Movement

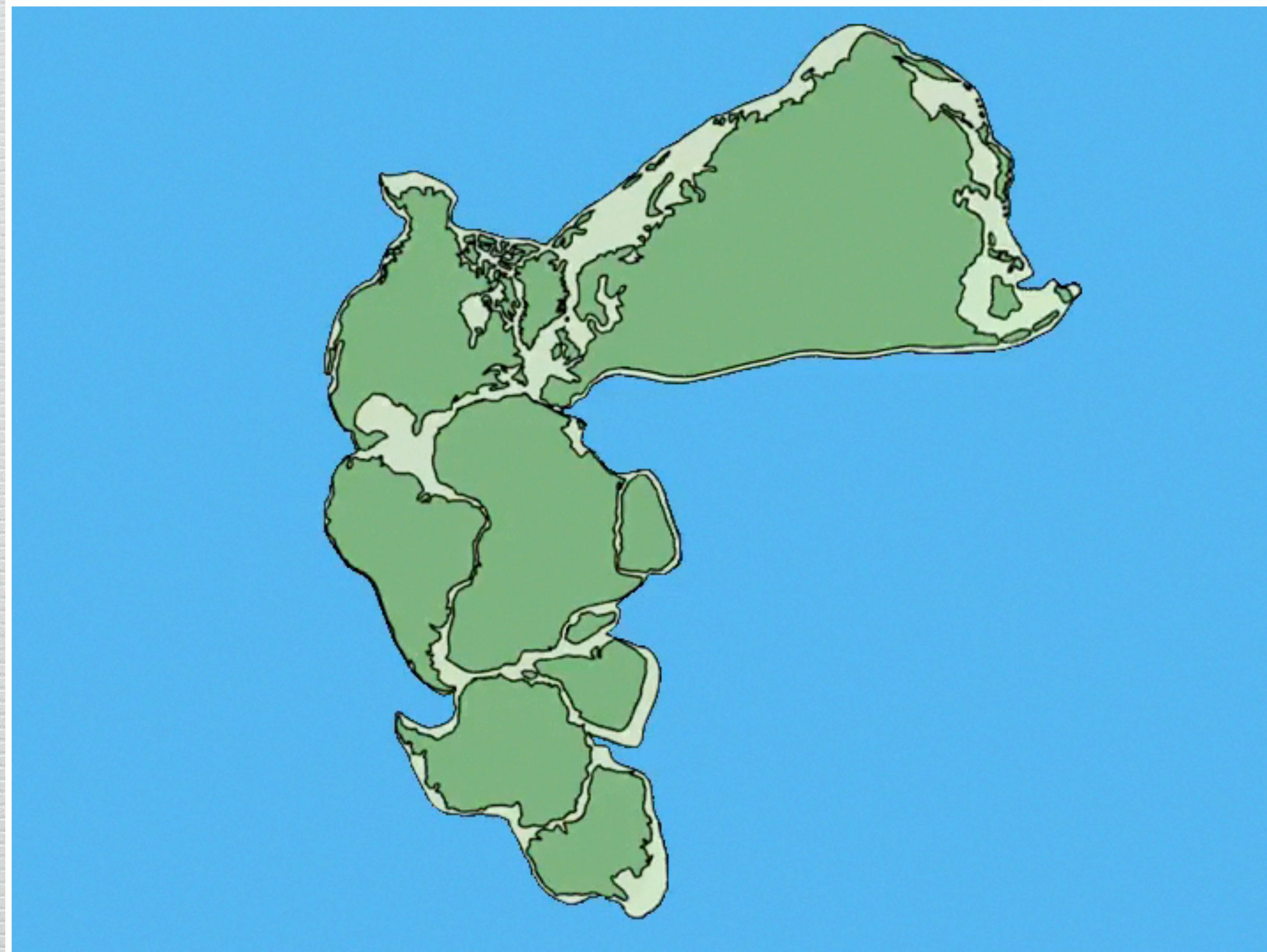
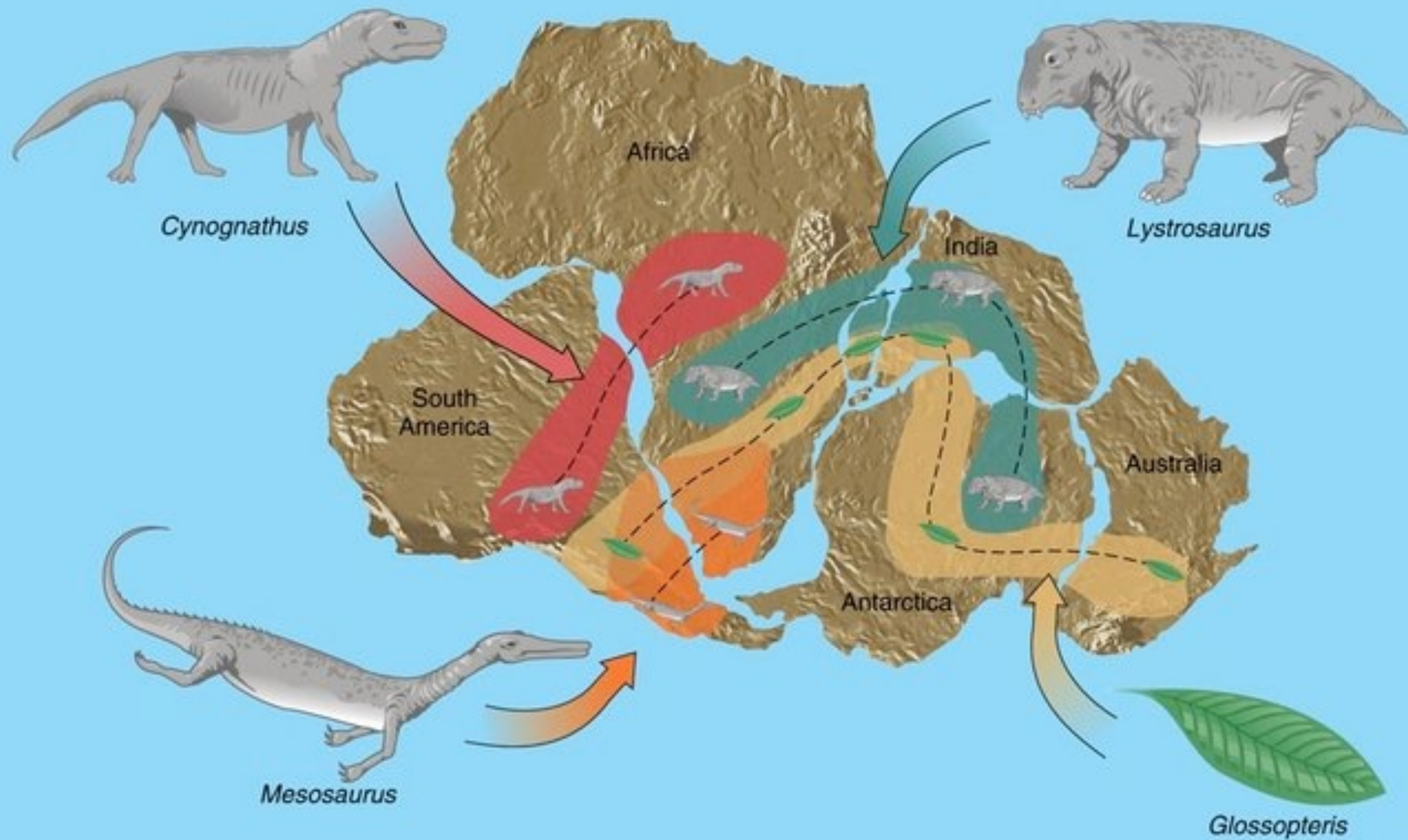


Plate Movement



THE AMOEBA PEOPLE
present

The Amoeba People

Tectonic Plates

